



For reservations or information
contact your travel professional or call

1-855-222-3214

www.emeraldwaterways.com



USA Office

20 Park Plaza

Suite 903 Boston MA 02116



EMERALD

W A T E R W A Y S



2016 MYANMAR AND IRRAWADDY

Introducing

Mystical Myanmar & the Irrawaddy River

We invite you to join us on a journey to our new and exciting destination Myanmar along the Irrawaddy river. Cruise the heart of Myanmar in comfort and style aboard Southeast Asia's most opulent ship, the Irrawaddy Explorer. Designed in sophisticated English colonial style to reflect the region's history but built with the contemporary passenger in mind, the Irrawaddy Explorer is a tastefully-appointed, 56-passenger vessel fitted with all of the conveniences of 21st-century travel.

Discover the very best that Myanmar has to offer on a 16-day, once-in-a-lifetime river expedition. From the rich cultures and history of Yangon to the magical Inle Lake and villages built on stilts, to exotic temples and Mandalay's pagoda pilgrimage sites and Gold Buddha statue.

The Myanmar region it remains fundamentally untouched by the advances of the modern world — a rare unsullied gem waiting to be explored. Discover this magical country in style when cruising aboard the luxurious Irrawaddy Explorer.

It's amazing what's included:

- All onboard meals and a collection of highlight dinners
- Complimentary tea, coffee, soft drinks, water and beer with dinner
- Complimentary house wines with dinner
- Bottled water restocked daily in your cabin
- An included shore excursion in every port
- Extra special included excursions with EmeraldPLUS
- Visit to a UNESCO World Heritage Site
- Spectacular service from an English speaking crew
- Knowledgeable local guides at each destination
- Complimentary internet in all public areas onboard the ship
- All airport transfers to and from your ship
- Airfare from 10 U.S. major gateways included

PLUS we even take care of all gratuities, saving you up to \$650 per couple on 16 day vacations.

FLY FREE*
FROM 10 U.S.
GATEWAYS
Expires October 31, 2015

Fly Free is from the following U.S. gateways: LAX, SFO, SEA, DEN, DFW, ORD, MIA, ATL, IAD, JFK. All other airports receive a \$1,000 air credit. Economy class on your Emerald Waterways choice of airlines. Offer is not transferable to cash. Fly Free Offer expires October 31, 2015.



Mystical Myanmar and Irrawaddy River Cruise

16 DAYS ROUNDTRIP YANGON

DAY 1: ARRIVE YANGON

Mangalaba and welcome to Burma, now officially the Republic of the Union of Myanmar! Arrive in Yangon where you'll be met at the airport by an Emerald Waterways representative and transferred to your centrally-located hotel. Although Myanmar's capital was recently moved to Naypyidaw, Yangon (formerly Rangoon) remains the people's capital and economic center of the country. As the heart of British Burma during the 19th century, Yangon has more colonial-era buildings than any other city in Southeast Asia. Take in your first glimpses of this stunning country as you travel from the airport to your hotel. Tonight, join your Tour Director and fellow passengers for a Welcome Drink followed by a traditional Burmese dinner.

Included meals: Welcome Drink and dinner.

DAY 2: YANGON

This morning's walking tour through the cobblestone streets of Yangon will leave you with sensory overload as you attempt to take in the incredible fusion of colonial architecture and stunning Buddhist stupas for which the city is known. On your tour, visit the must-see Sule Pagoda that is believed to contain a hair given by the Buddha to two Burmese merchants. Along the way, take time to explore the local markets where they sell everything from fresh produce to temple offerings. When taking in the sights, sounds, and smells of the marketplace, you'll realize that you've experienced Yangon from a uniquely Burmese perspective. Later this afternoon, drive past Kandawgyi Lake and

visit Yangon's reclining Buddha. At 65m in length, the statue's placid face is topped by a jewel-encrusted crown; the soles of its feet are intricately painted with symbols of the Buddha's life. As the sun begins to set on the gold-leaved Shwedagon Pagoda, watch locals gather for prayer and end your day with a mystical, out-of-body experience.

Included excursions: Walking tour of Yangon
Included meals: Breakfast, lunch and dinner

DAY 3: YANGON – INLE LAKE

After breakfast, transfer to the airport for your flight to Heho. Removed now from fast-paced city life to the tranquil Burmese countryside, you'll enjoy lunch at a nearby winery where they serve locally grown wines made from grapes imported from France and Spain. Continue afterward to Inle Lake, truly a sight to behold with its stilted bamboo houses, ancient Buddhist pagodas, and floating gardens and markets. A trip across Myanmar's second-largest lake on a private motorboat will provide an intimate look into the lives of the Intha people who live here. Keep your eyes peeled during the ride for Inle's famous leg rowers, often seen working for the day's catch.

Included excursions: Visit to a winery and motor boat tour of Inle Lake
Included meals: Breakfast, lunch and dinner

DAY 4: INLE LAKE

Take the opportunity to better understand the Intha way of life as you witness the lake's

people go about their day-to-day activities. Wander through Inle's floating market—which changes location every five days—and barter for traditional goods. This afternoon, visit a local family-run restaurant and uncover the spicy secrets of traditional Intha cooking. Later, travel to the Phaung Daw Oo Pagoda, considered the holiest site on the entire lake. Along the way, you'll have the chance to explore several small lakeside villages where you'll visit a weaving factory as well as a cheroot factory in which they make classic Burmese cigars.

EmeraldPLUS: Visit a local family-run restaurant for a cooking demonstration

Included excursions: Boat tour of floating market and guided tour of Phaung Daw Oo Pagoda

Included meals: Breakfast, lunch and dinner

DAY 5: INLE LAKE - MANDALAY

Relax along the shores of Inle Lake, taking in the early-morning bustle and distant mountain views. Transfer later to Heho for a short flight to Mandalay—Myanmar's second-largest city, cultural and religious center, and one-time capital. Once in Mandalay, you'll discover streets lined with spectacular, old monasteries. Climb Mandalay Hill at sunset for commanding views of the Irrawaddy and surrounding countryside.

Included meals: Breakfast, lunch and dinner

DAY 6: MANDALAY – EMBARK CRUISE

Rise before the sun to witness a procession of saffron-clad monks walking silently

through the streets collecting alms. Partake in this moving and memorable experience by offering the monks rice for their bowls. Further explore Mandalay's most renowned monasteries, including the Mahamuni Pagoda and Shwenandaw, or Golden Palace Monastery. The Kuthodaw Pagoda, or the "World's Largest Book," is so called for its collection of over 700 marble slabs inscribed with Buddhist teachings. After a full morning of exploration in Mandalay, board the luxurious, all-suite Irrawaddy Explorer to begin your upriver adventure. Enjoy lunch onboard followed by an excursion to Amarapura, penultimate Burmese Royal Capital. Here you'll visit U-Bein Bridge, the longest teak bridge in the entire world. After your journey to Amarapura, return to the ship for tonight's Welcome Cocktail reception and Dinner.

EmeraldPLUS: Witness Buddhist monks collecting daily alms before sunrise

Included excursions: Guided tours of Mandalay and Amarapura

Included meals: Breakfast, lunch and Welcome Dinner

DAY 7: AVA - MINGUN

Aboard the Irrawaddy Explorer, take in the sights and sounds of the river while enjoying spacious cabins and outstanding cuisine on a deluxe nine-night cruise. Cruise to Mingun, home of the all-white Hsinbyume Pagoda, built to represent the mythical Mount Meru. Visit the unfinished Mingun Pagoda and discover the stories behind this massive unfinished brick pagoda. Nearby, admire the world's largest uncracked ringing bell, Mingun Bell. Continue sailing to the ancient capital of Ava. In Ava, explore this former capital of the long-forgotten Ava Kingdom by horse-cart. Here you'll visit

landmarks such as the teak Bagaya monastery, the 19th-century brick Me Nu Ok monastery, and the Nanmyin watchtower. Return to your ship for an onboard performance of traditional Burmese dancing.

EmeraldPLUS: Evening entertainment with traditional Burmese dancing

Included excursions: Guided tours of Mingun, Ava and Sagaing

Included meals: Breakfast, lunch and dinner

DAY 8: MONYWA

After sailing into Myinmu, journey to Monywa where you'll explore the extraordinary Thanboddhay monastery. This monastery is one of the most intricately decorated temples in all of Myanmar, containing over 500,000 images of Buddha! Along with spectacularly-painted, sandstone Buddha caves, Monywa is also home to the world's longest reclining Buddha at 300 feet. Tonight, you'll enjoy an informative onboard lecture: "Myanmar—Past & Present."

EmeraldPLUS: Onboard lecture: "Myanmar – Past & Present"

Included excursion: Guided tour of Thanboddhay monastery

Included meals: Breakfast, lunch and dinner

DAY 9: YANDABO

Today, you'll have the opportunity to become acquainted with the Burmese people when we visit the riverside village of Yandabo. Famous for the peace treaty signed here that ended the First Anglo-Burmese War, Yandabo is a small, traditional village along the Irrawaddy largely untouched by the modern world. Learn the finer points of pottery making before heading to a nearby school where you'll have the chance

to interact with local children as they go about their daily activities.

EmeraldPLUS: Onboard lecture: "Life Along the Irrawaddy River."

EmeraldPLUS: Visit a local school to learn about daily life

Included meals: Breakfast, lunch and dinner

DAY 10: BAGAN

This morning, we'll take time to explore the fascinating city of Bagan in greater depth. Bagan is an ancient city in the Mandalay region of Myanmar with over 2,000 breathtaking Buddhist temples whose myriad spires rise majestically above the surrounding plains. Many of the temples were constructed close to 900 years ago, and today they stand testament to the wealth and power of the once-mighty Bagan Dynasty—the first kingdom to unify the various regions that form present-day Burma. As evening approaches, take a horse-cart to one of Bagan's most noteworthy temples, Shwesandaw Pagoda. From here, you'll take in the once-in-a-lifetime view of the sun setting on the region's expansive collection of pagodas.

EmeraldPLUS: Horse-cart ride to Shwesandaw Pagoda

Included excursions: Guided tour of Bagan

Included meals: Breakfast, lunch and dinner

DAY 11: BAGAN – TAN KYI PAYA

Enjoy a leisurely morning in the bustling port city of Bagan where you'll have time to explore the markets and browse for locally-produced wood carvings, fabrics, longyis, and rattan products. As an alternative, book a sunrise Hot Air balloon excursion over Bagan to see the

unrivaled majesty of the temple landscape drifting below you. After lunch sail to the village of Tan Kyi. We will ascend to the mountaintop of one of four stupas that originally marked the edges of Bagan city to enjoy the views.

Included excursion: Travel up Tan Kyi mountain for incredible views

Included meals: Breakfast, lunch and dinner

DAY 12: SALAY - MAGWE

Approximately an hour and a half south of Bagan lies Salay, a colorful old religious center filled with spectacular teak monasteries. Visit Youqson Kyuang and explore the monasteries' intricate teak carvings detailing the life and stories of Buddha's past life. See Man Pagoda, which holds the largest lacquer Buddha image in Myanmar, before visiting the village's well-preserved colonial section, which is filled with charming houses indicative of the era of British rule.

Included excursions: Guided tour of Youqson Kyuang and Man Pagoda

Included meals: Breakfast, lunch and dinner

DAY 13: MAGWE

Arrive in Magwe where you'll visit Myat Than Lun Paya, a pagoda constructed from solid gold bricks and set atop a scenic hill from which you can take in spectacular vistas of the surrounding countryside. Return to the ship for an afternoon of Scenic cruising.

Included excursions: Guided tours of Magwe

Included meals: Breakfast, lunch and dinner

DAY 14: THAYETMYO - PROME

Visit the town of Thayetmyo, which once guarded the border between Royal Burma and British Burma. Visit the oldest golf course in Myanmar, stroll through the greens or even practice some putting! On your last day of cruising, continue towards Prome. In the afternoon visit the impressive Shwesandaw Pagoda, one of the most important Buddhist pilgrimage sites in Myanmar. The pagoda contains a series of five terraces, topped with a cylindrical stupa which has a bejeweled umbrella and enshrined within are four strands of sacred hair as well as eight other relics of Buddha. Next, explore Sri Ksetra, one of the ancient Pyu Kingdoms that flourished for over 1,000 years between 200 B.C and 900 A.D. and inscribed onto the World Heritage list in June 2014, Myanmar's first. Return to the ship for your farewell dinner.

Included excursion: Guided tours of Shwesandaw Pagoda and Sri Ksetra

Included meals: Breakfast, lunch and Farewell dinner

DAY 15: DISEMBARK CRUISE - YANGON

Enjoy your last breakfast onboard before disembarking and transfer to Yangon. In Yangon you'll enjoy free time to further explore this incredible city. Perhaps you'll choose to visit Bogyoke Aung San Market? Formerly Scott's Market, Bogyoke Aung San is a bazaar filled with all sorts of interesting Burmese handicrafts and antiques. Or maybe you'll want to visit the Botatoung Pagoda, yet another of the city's

many impressive temples. Tonight, gather with your newfound friends for a Farewell Dinner in one of Yangon's finest restaurants. Dine on exquisite Burmese food and enjoy the celebratory atmosphere as you commemorate the end of your life-changing journey through mystical Myanmar.

Included meals: Breakfast and Farewell Dinner

DAY 16: DEPART YANGON

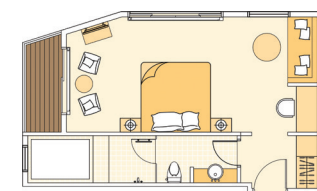
After breakfast, enjoy a day at leisure before transferring to the airport for your onward or homebound journey.

Included meals: Breakfast

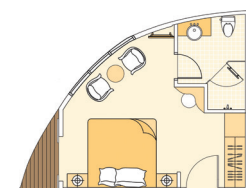


Irrawaddy Explorer deck/cabin plan

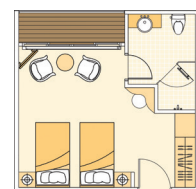
■ Irrawaddy Explorer ■ Draft: 1.22m ■ Length: 188m ■ Width: 13m ■ Suites: 28 ■ Guests: 56



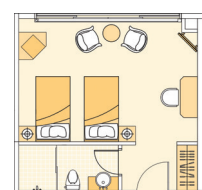
■ Mandalay Suite
(including Balcony)
409ft²/38m²



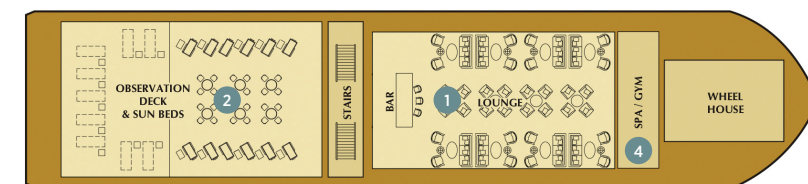
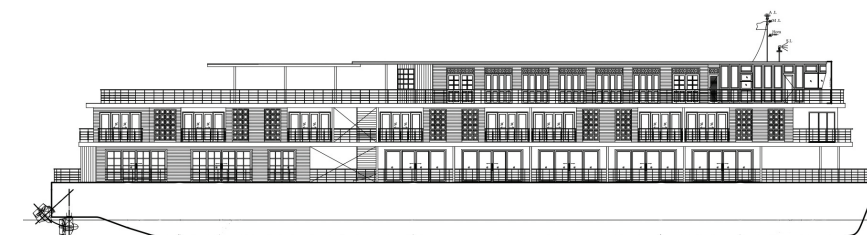
■ Kipling Suite
(including Balcony)
273ft²/25.4m²



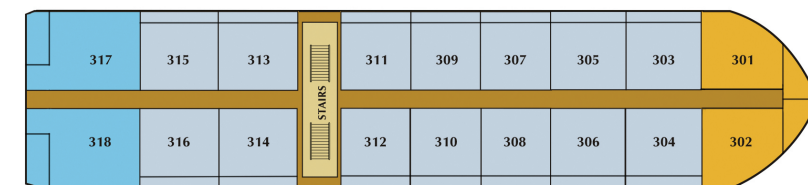
■ Orwell Suite
(including Balcony)
280ft²/26m²



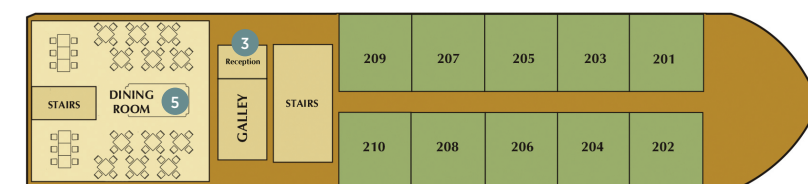
■ Maugham Suite
(French Balcony)
280ft²/26m²



SUN DECK



IMPERIAL DECK



COLONIAL DECK

- 1 Bar and Lounge
- 2 Sun Deck with Deck Chairs
- 3 Reception
- 4 Spa/Gym
- 5 Dining Room/Restaurant

FLY FREE FROM 10 U.S. GATEWAYS. SEE TERMS & CONDITIONS BELOW.

16 DAY YANGON - YANGON

2016 Departure Dates	2017 Departure Dates	2018 Departure Dates	2019 Departure Dates	2020 Departure Dates
Tour Code: EWMY	MAU Maugham Suites	OS Orwell Suites	KS Kipling Suites	MS Mandalay Suites
AUG 27	\$7,175	\$7,550	\$7,920	\$8,570
NOV 7	\$7,675	\$8,050	\$8,420	\$9,070

10 DAY MANDALAY - YANGON (CRUISE ONLY)

2016 Departure Date	2017 Departure Dates	2018 Departure Dates	2019 Departure Dates	2020 Departure Dates
Tour Code: EWMC	MAU Maugham Suites	OS Orwell Suites	KS Kipling Suites	MS Mandalay Suites
SEP 1	\$2,895	\$3,270	\$3,640	\$4,290
NOV 12	\$3,395	\$3,770	\$4,140	\$4,790

DISCOVER MORE

HOT AIR BALLOONS OVER BAGAN

Experience a spectacular and awe inspiring flight over the ancient temples of Bagan and see the unrivaled majesty of the temple landscape drifting below you in style, comfort and safety. Hot Air Balloon flights depart at dawn and last approximately 45 minutes. Must be booked on tour.



Fly Free is from the following U.S. gateways: LAX, SFO, SEA, DEN, DFW, ORD, MIA, ATL, IAD, JFK. All other airports receive a \$1,000 air credit. Economy class only on Emerald Waterways choice of airlines. Offer is not transferable to cash. Fly Free Offer expires October 31, 2015

Please note: This is a draft deck plan and some modifications are possible prior to delivery of the ship.